

ITALTILE COMMERCIAL - MATRIX

NEW
MATRIX BY GRYPHON
BOTH ON-TREND AND ECO-CHIC.

The new Matrix tile range is a beautiful example of Gryphon's sustainable design. It is a 590x590mm, screed-style porcelain tile with an eye-catching Chepo design. It is a lively and unusual Chepo design which will bring a layer of variances and dynamic movement to any contemporary space.



ITALTILE

COMMERCIAL

Contact Us:

GAUTENG - commercialgauteng@italtile.co.za **KZN** - commercialkzn@italtile.co.za

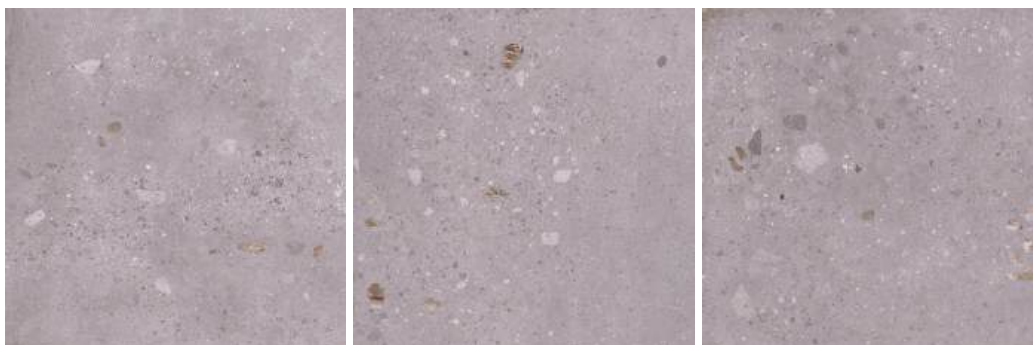
WESTERN CAPE - commercialcape@italtile.co.za **NELSPRUIT** - commercialnelmpu@italtile.co.za

MATRIX

GREY

590x590mm

Available in
slip-resistant finish



MATRIX

CHARCOAL

590x590mm

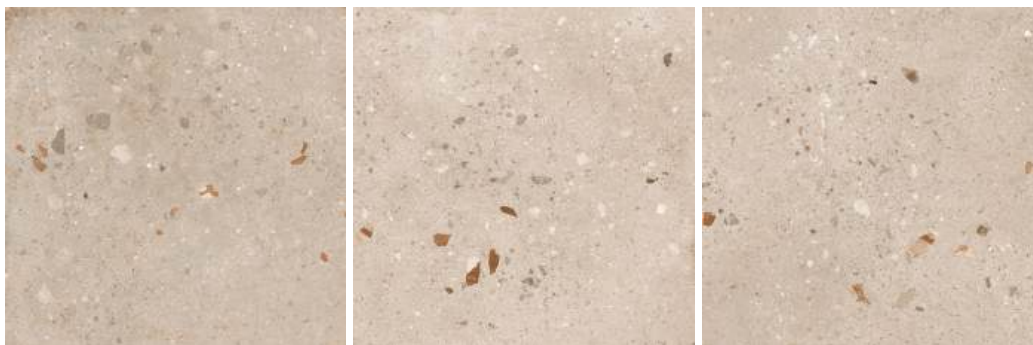
Available in
slip-resistant finish



MATRIX

TAUPE

590x590mm



MATRIX SPECIFICATIONS

Origin
South Africa

Supplier
GRYPHON

Size
590x590

Finish
Matt finish, glazed porcelain
tile with rectified edges

Faces
8

Origin
South Africa

Guarantee
10-Years

Feature
Ecotec technology

The Matrix tile range is an aesthetic that offers ever more imaginative dappling, with bolder splashes, wildly contrasting fragments and XXL speckles.



GAUTENG - commercialgauteng@italtile.co.za **KZN** - commercialkzn@italtile.co.za
WESTERN CAPE - commercialcape@italtile.co.za **NELSPRUIT** - commercialnelmpu@italtile.co.za

With new **EcoTec**, Light means strong.

LIGHT: EcoTec reduces the amount of clay required for tile bodies.

STRONG: EcoTec tile bodies are 25% to 55% stronger than SABS SANS1449 MOR standards.

GREEN: Less energy is required for firing. Less water per m² utilised throughout the entire process. Tiles are lighter to transport, thus helping to reduce fuel costs and carbon footprint.



ECOTEC
TECHNOLOGY

Italtile is extremely proud of its longstanding relationship with South African tile manufacturers Gryphon, masters of sustainability and the pioneers of EcoTec. The EcoTec process creates tiles that are lighter (less clay is used in the tile body) and stronger (24% to 55% stronger than the required SABS standards). Less energy is used in the firing process. The lighter tiles are easier on the transport vehicles which use less fuel because of less weight; and less water is used in the entire manufacturing process.



Uses Less Energy



Lighter To Transport

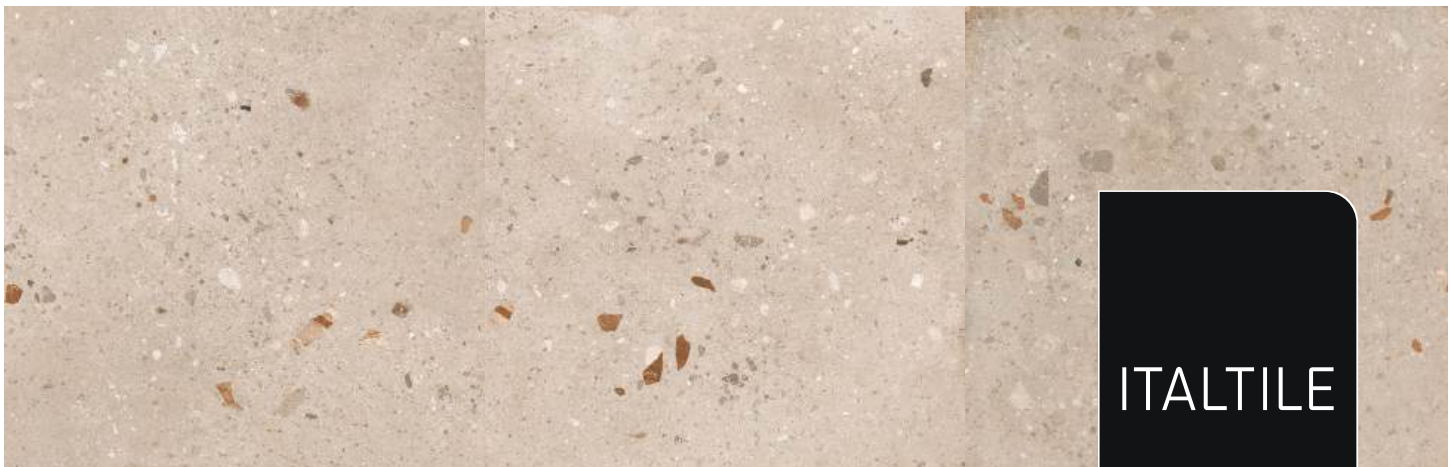


Uses Less Water



Reduce Carbon Footprint

From the quarry to your home, EcoTec provides benefits throughout the value chain.



ITALTILE

COMMERCIAL

Contact Us:

GAUTENG - commercialgauteng@italtile.co.za **KZN** - commercialkzn@italtile.co.za

WESTERN CAPE - commercialcape@italtile.co.za **NELSPRUIT** - commercialnelmpu@italtile.co.za